

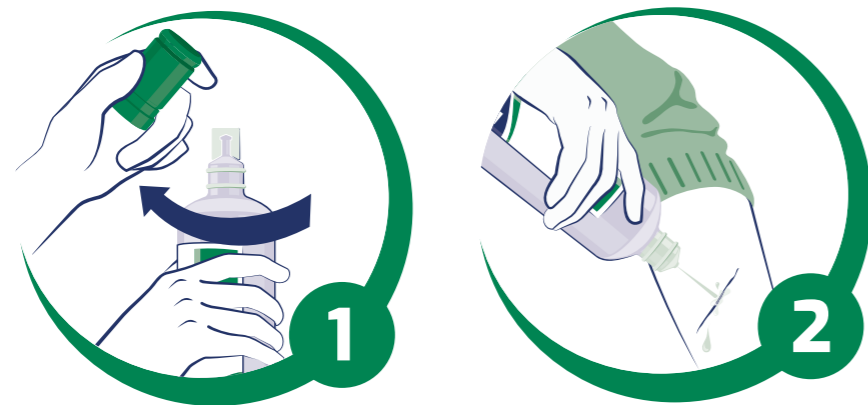


# CATALOG EYE WASH

Eye wash



Wound irrigation



/  
**CATALOG  
EYE WASH**

La soluzione sterile salina ha la stessa percentuale di sale del sangue 0,9% e non irrita le mucose.

- È sterile pertanto riduce il pericolo di contaminazione, offre una minor probabilità di reazione con la sostanza contaminante.
- La conformazione del tappo ottimizza la quantità di acqua per irrorare l'occhio.
- La possibilità di comprimere il flacone permette di dosare la quantità di soluzione in base alla necessità.

**DROP  
EYE WASH  
STATION**

CPS202



First eye wash station in Italy and all over the world with this innovative design. Formed by two bottles of sterile singleuse saline solution 500 ml with eye cap for quick use. Thermoformed support with transparent front with dustproof closure, equipped with one mirror and supplied with screws and plugs for wall application.

[▶ WATCH THE VIDEO](#)

**DUAL DROP  
EYE WASH  
STATION**

CPS209



First eye wash station in Italy and all over the world with this innovative design. Formed by one bottle of sterile singleuse saline solution of 500 ml and one bottle of PH neutral sterile solution. Thermoformed support with transparent front with dustproof closure, equipped with mirror and supplied with screws and plugs for wall application.

[▶ WATCH THE VIDEO](#)

## BUFFET DROP EYE WASH STATION

CPS211



Prima stazione di lavaggio oculare d'emergenza in Italia e nel mondo con questo design innovativo, composta da 2 flaconi di soluzione sterile a PH neutro da 250 ml, supporto termoformato con parte frontale trasparente con chiusura antipolvere, dotato di specchietto e fornito con viti e tasselli per l'applicazione a parete.

[▶ WATCH THE VIDEO](#)

## K3 WASH KIT

CPS995 - CPS995A



This cabinet contains 3 bottles for eye washing, appropriate for a professional and efficient assistance in first aid eye injuries.

Content:  
3 Eye wash solutions 500 ml + cap;  
5 Sterile gauze 18x40 cm;  
1 Splinter removal pencil;  
6 Sterile adhesive eye patches;  
1 Set of 3 veils Paper towels of 10 pieces;  
1 adhesive mirror 140x80x2 mm.

## EYE WASH KIT

CPS258



Suggested for all companies and for motor vehicles when an eye wash emergency occurs and for medication. Polypropilene box with wall bracket, swivel catches and handle.

Content:  
1 NILO empty eye wash bottle ml 500;  
1 EYE wash solution ml 500 (ACQ414);  
2 sterile eye pads 2 sterile gauze packs cm 18x40;  
1 pair of scissors lister cm 14,5;  
1 adhesive plaster roll m 5 x 1,25 cm;  
1 paper handkerchief pack 10 pcs;  
1 mirror guidance instructions.

## NILO EYE EMPTY WASH BOTTLE

FLA101



Polyethylene emergency eye wash anatomic bottle ml 500.

Can easily be used for a plentiful eye wash from the bottle grided top.  
Can be desmounted and cleaned to be re-used.

# STERILE SOLUTION FOR EYE WASH

ACQ414

*Soluzione monouso, sterile di cloruro di sodio 0,9% per il lavaggio oculare d'emergenza. Per l'utilizzo basta applicare il tappo sopra il flacone e girarlo in senso orario in modo da rompere la protezione.*

Il flacone è pronto all'uso e munito di tappo. Disponibili in tre formati:  
ACQ414 - flacone di lavaggio oculare f.to 500 ml;  
ACQ408 - flacone di lavaggio oculare f.to 250 ml;  
ACQ409 - flacone di lavaggio oculare f.to 100 ml.



# SPLINTER REMOVAL PENCIL

MAT022

*Tool for removing metal chips in the eyes, supplied with practical case.*

Formed on one side by a NEODYMIUM magnetic tip, with an exceptional force of attraction, that allows the removal of ferrous splinters avoiding a dangerous approach to the eyeball and on the other side by an abrasionresistant nylon buttonhole that allows the removal of other kinds of splinters. The body and the support of the instruments are made of anodized aluminum. The neoprene seals ensure a secure hold of the pencil.



# STERILE NEUTRAL PH SOLUTION FOR EYE WASH

ACQ406

*Neutral PH solution for emergency eye wash and for the neutralization of acids and alkalis.*

The bottle is supplied with a practical eye cap for quick and effective use and with label instructions. After neutralization, the eye should be rinsed with sterile solution 0.9% sodium chloride or water for a minimum of 15 minutes.



# PORTABLE EYE WASH UNIT WITH WATER TANK

LAV250

*Eye/body emergency shower (DIN 12899 - UNI 9608) with soft eye protecting cup and anti-dust cover.*

Soft areated water stream to standards. Opening by arrest lever. Supplied with 1,5 m flexible stainless steel hose. Stainless steel tank total capacity 18 litres of wich 15 litres drinking water. To be pressurized with air at 6 bar through JOLLY connection placed on the tank. Supplied with pressure control gauge and safety relief valve in case of over-pressure.



# EYE WASH WALL STATION WITH SINK

LAV300



*Manual wall washer with polypropylene shower top/tray.*

Structure in galvanized steel painted epoxyally. The internal components are made of anti-limescale and anti-spray material. The installation is external on the wall with drive with manual closing valve and side push.

# FLOOR SHOWER WITH POLYPROPYLENE SHOWER HEAD

LAV320



*Floor shower with polypropylene shower head.*

The structure is made of mechanically painted galvanized steel epoxyally and the internal components are made of anti-limescale and anti-spray material. The drive with rigid tie rod with triangle handle and the installation on the floor. the shower top is complete with a manual closure valve.

# WALL SHOWER WITH POLYPROPYLENE SHOWER HEAD

LAV310



*Wall shower with polypropylene shower head.*

The structure is made of mechanically painted galvanized steel epoxyally and the internal components are made of anti-limescale and anti-spray material. The shower top complete with manual closure valve and has a rigid tie drive with triangle handle. Wall installation.

# MANUAL DOUBLE OPENING FLOOR WASHERS

LAV340



*Manual double opening floor washers with polypropylene tray.*

Manual double opening floor washers with polypropylene tray. The structure is made of mechanically painted galvanized steel epoxyally and the internal components are made of anti-limescale and anti-spray material. Floor installation with air flow and drive with manual closure valve and side push.

**LAV330** Floor washers with double opening.

## SHOWER WITH EYEWASH

LAV350



*Shower with floor eye washers combined with double manual and pedal opening of water, with shower head and polypropylene tray.*

The structure is made of painted galvanized steel epoxyally and the interiors are made of anti-limescale and anti-spray material. The installation is on the floor and the shower head is complete with manual closing valve. The shower drive is with a rigid tie rod with triangle handle and the eye washer is air-flowing with drive with manual closure valve and side and pedal push. It provides for interception and adjustment valve.

## SHOWER WITH PLATFORM AND SELF-ADHERING ANTIFREEZE VALVE

LAV370



*Shower shower with platform and self-stick antifreeze valve with action independent of the shower.*

The structure is made of mechanically painted galvanized steel epoxyally and the internal components are made of anti-limescale and anti-spray material. The installation is on the floor and the polypropylene shower top is complete with a manual closure valve, the tray is made of polypropylene. The drive with rigid tie rod with triangle handle. The door washer is air-flowing and the drive is with manual closure valve and side and platform push.

## SHOWER WITH FLOOR WASHERS WITH DOUBLE OPENING MANUAL AND PEDAL

LAV360



*Shower with floor washers combined with double manual and pedal opening, with shower head and polypropylene tray.*

The structure is made of painted galvanized steel epoxyally and the imposing interiors are made of anti-limescale and anti-spray material. The installation is on the floor and the shower top is complete with manual closing valve. The drive is with a rigid tie rod with triangle handle and the door washer is air-flowing with drive with manual closure valve and side and pedal push. It provides for interception and adjustment valve.

## LAVAOCCHI A PAVIMENTO A DOPPIA APERTURA MANUALE

ACQ013



*Lavaocchi a pavimento a doppia apertura manuale con vaschetta in polipropilene.*

La struttura è in acciaio galvanizzato verniciato epossidicamente e le componenti interne sono in materiale anticalcare e anticorrosione. L'installazione a pavimento con flusso areato e azionamento con valvola a chiusura manuale e push laterale.



[VISIT THE WEBSITE >](#)